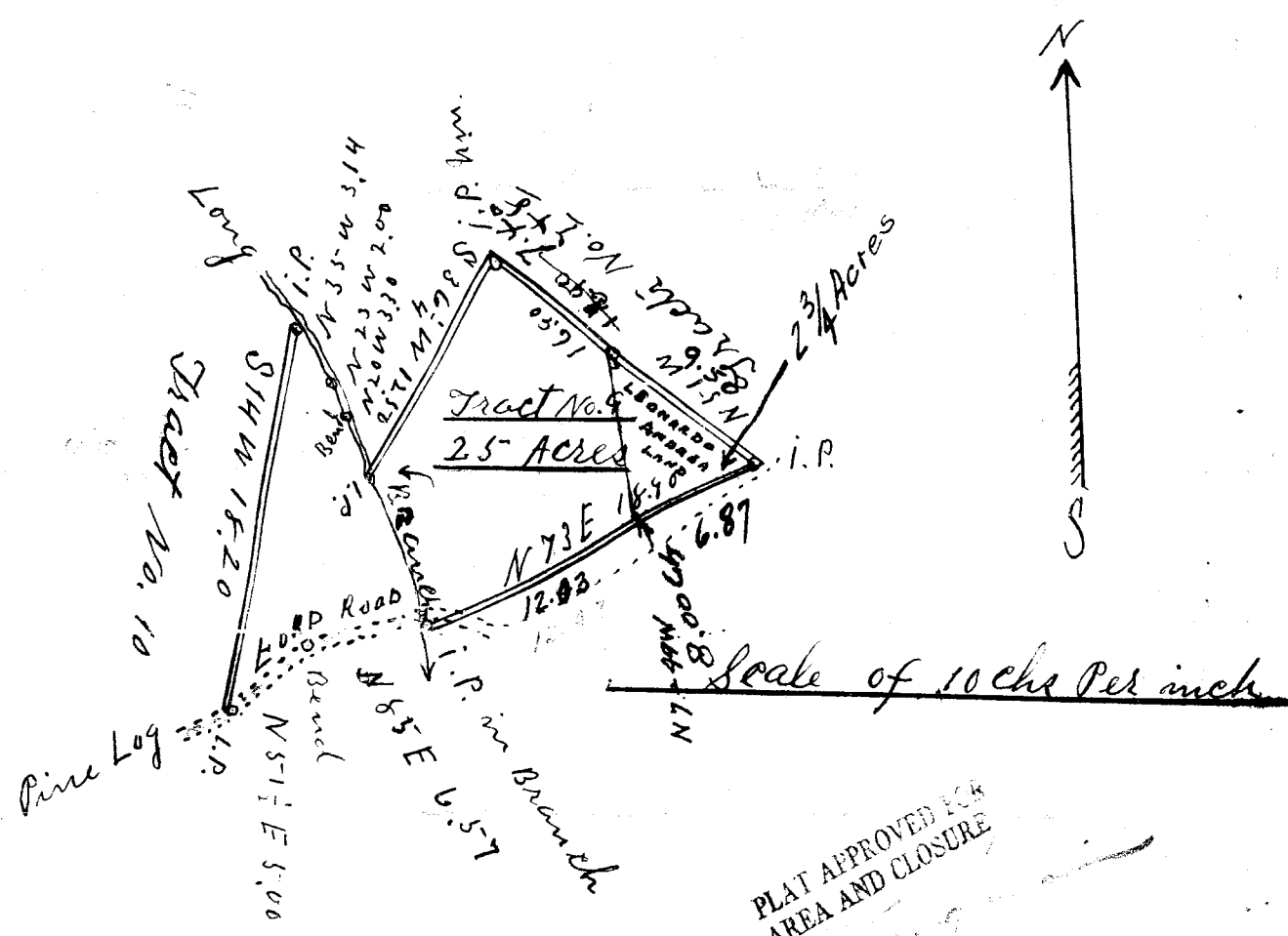


25-
2.75-
22.25
40
62.25-



PLAT APPROVED FOR  
AREA AND CLOSURE  
APR 8 1947

South Carolina }  
Greenville County } Tract No. 9 of R. L. Andrea's  
Estate 2.5 Acres Surveyed  
July 9, 1926  
W. A. Hester  
Reg. Surveyor

BROWNFIELD - ON - LONE-BRANCH

PINE LOG FORD ROAD